



**Welcome to Leach!**



**LEACH (HK) Co., Ltd.**  
**LEACH (SZ) Co., Ltd.**

<http://www.leach-pcba.com>

# 1. EMS since 1999



**LEACH devotes to turnkey solution for Electronic Contract Manufacturing.**

## **We offer:**

- OEM & ODM service
- Components global procurement
- Prototype and NPI
- PCB Assembly (SMT/DIP)
- AOI, ICT, X-Ray
- Programming and functional testing
- Cable assembly and Box-build
- Global Logistics

**Engineering expertise in complex PCB assembly for industrial control, medical/health care, Telecom, Energy, traffic signs etc.**

## 2. Why LEACH



- LEACH has a professional bilingual engineering team that is capable of converting raw materials of design into production details.
- LEACH's international sourcing team helps customers take good control of materials cost and delivery time.
- Super flexible production satisfies well the multiple varieties and high-mix projects. No matter your order Qty. is small or large, we can ensure the timely delivery.
- Business scale: 5~6 million USD revenue; 102~110 employees; 2000 Square meters.

**Professional, International, Super-Flexible**

# 3. Milestone



**1999.8** → **Shenzhen LEACH PCBA founded**

**2005.8** → **ISO9001:2000 certified by CTI**

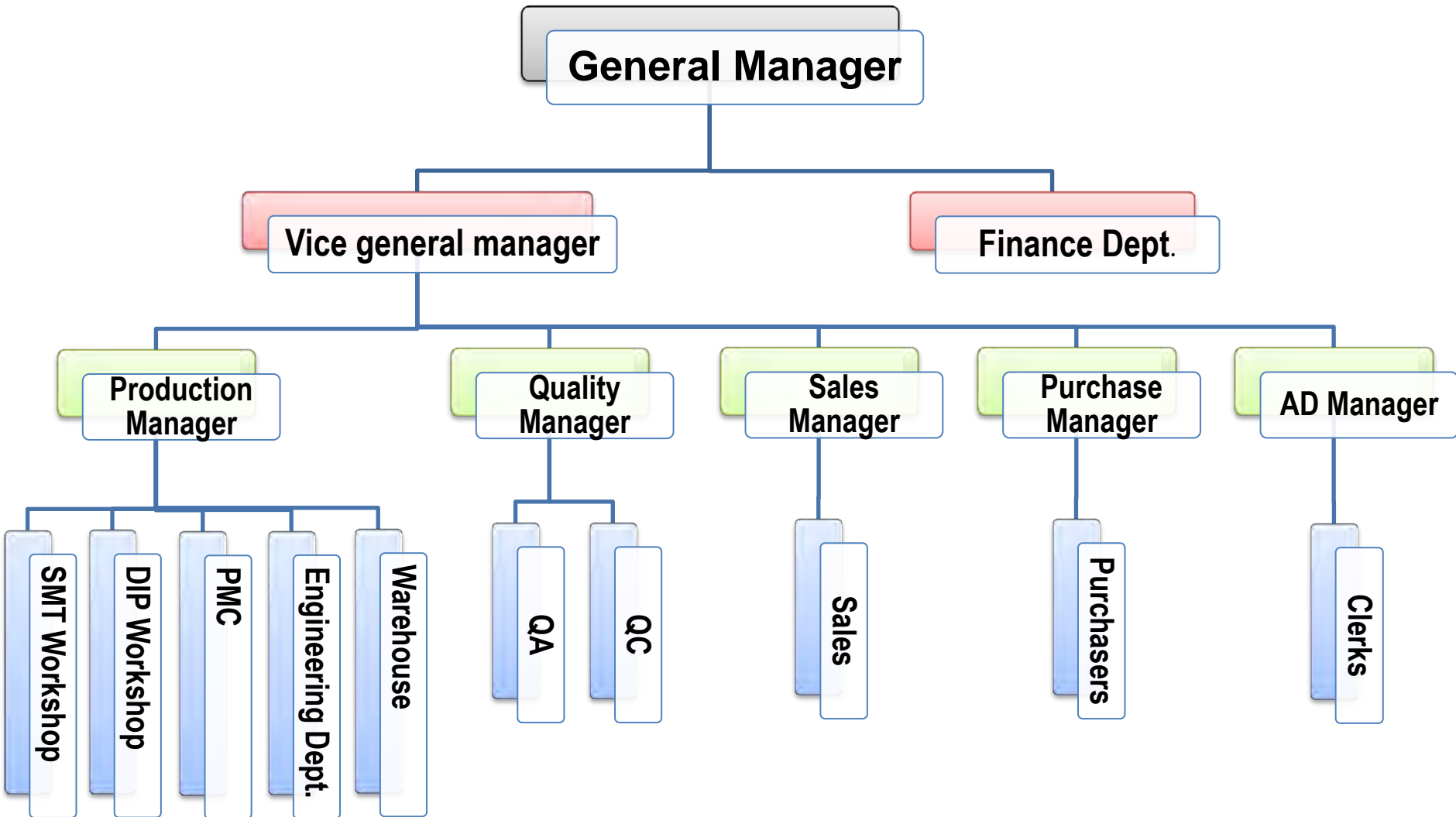
**2011.10** → **ISO9001:2008 certified by CTI**

**2014.1** → **Move to Wandu Industrial Park**

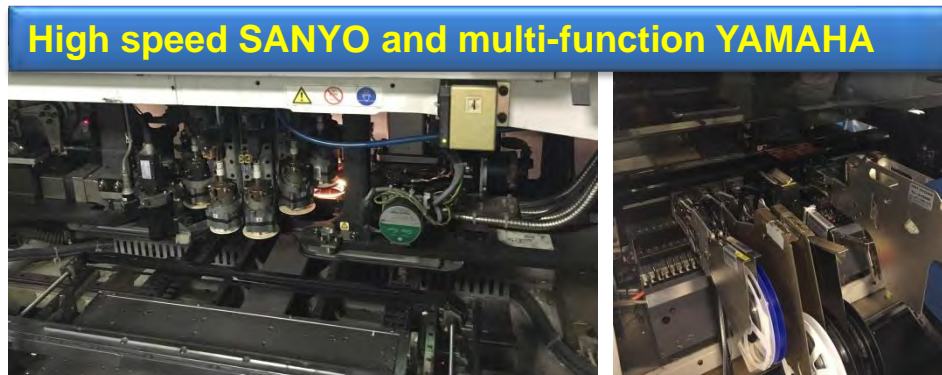
**2015.2** → **LEACH (SZ) Co., Ltd. founded**

**2015.9** → **ISO9001 and 13485 certified by NQA**

# 4. Organization Chart



# 5. Main Facilities-SMT



# 5. Main Facilities-DIP



2 DIP lines



# 5. Main Facilities-final assembly



## 2 final assembly lines



# 5. Main Facilities-Inspection



2 AOI machines



1 ICT machine



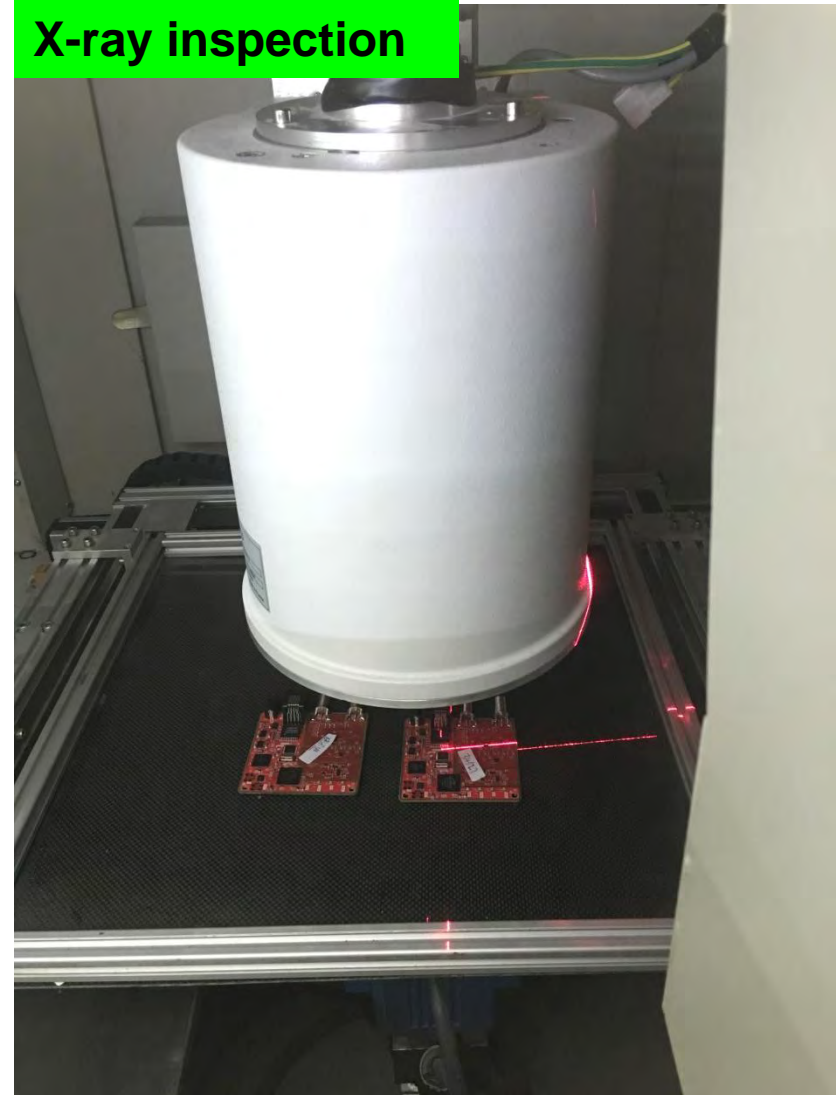
# 5. Main Facilities-Inspection



X-ray machine



X-ray inspection



# 6. Certificates



## ➤ Shenzhen LEACH PCBA

ISO 9001:2008

证书号 Certificate No.: 04114Q20319R1M

**CTI**

**质量管理体系认证证书**

QUALITY MANAGEMENT SYSTEM CERTIFICATE

**副本**

**兹证明**  
This is to certify that  
**深圳市利勤电子有限责任公司**(组织机构代码: 71522198-2)  
Shenzhen LEACH PCBA Co., Ltd.(Organization Code: 71522198-2)  
住所: 深圳市龙华新区观澜茜坑社区坑老村万地工业区 19 号厂房 1、2 层北半侧  
Registration Address: The north side of floor 1 & 2, Block 19, Wandi Industrial Park, Xikeng  
Laocun, Guanlan, Longhua New District, Shenzhen City.

**建立的质量管理体系符合标准**  
Has been awarded this certificate for compliance with the standard  
**GB/T19001-2008/ISO9001:2008**

生产/经营场所: 深圳市龙华新区观澜茜坑社区坑老村万地工业区 19 号厂房 1、2 层北半侧  
Production/Business Address: The north side of floor 1 & 2, Block 19, Wandi Industrial  
Park, Xikeng Laocun, Guanlan, Longhua New District, Shenzhen City.

覆盖的产品及过程: 线路板的贴片及焊接加工; 工控产品(箭头板、信息屏)的设计开发  
Range of Products and Process: Sticking To Slice and Welding Processing of Circuit  
Board; R&D for Industrial Control Boards(i.e. Traffic Arrow board, VMS board)

发证日期: 2014/10/08 有效期至: 2017/10/07 首次发证: 2005/08/29 换证日期: \*\*\*\*\*  
Issue Date: 2014/10/08 Expiry Date: 2017/10/07 Initial Issue: 2005/08/29 Recertification: \*\*\*\*\*

证书继续有效以是否加贴监督合格标志为准  
Surveillance conformity label should be pasted below for continual effectiveness of this certificate.

本证书信息可在我司网站 ([www.cti-cert.org](http://www.cti-cert.org)) 及国家认证认可监督管理委员会官方网站 ([www.cnca.gov.cn](http://www.cnca.gov.cn)) 上查询  
You can seek the certificate details both on the CTI official website ([www.cti-cert.org](http://www.cti-cert.org)) and the National Certification and Accreditation  
Supervision and Administration Commission official website ([www.cnca.gov.cn](http://www.cnca.gov.cn))

第一次监督合格标志 第二次监督合格标志

**CNAS** **IAF** 董事长 **President**

公司地址: 深圳市福田区福强路401号世纪科技园B座5楼  
Add: 5th Floor, 401 Century Techwork Culture Square, No.401 Fuyang Road, Futian District, Shenzhen, China

<http://www.cti-cert.org>

Elevator Board Security Certificate

**CNAL** **MA** **AL**

No. L0454 (2009)认证内字(IV0708)号 (2009)认证监字(134)号

**TX** **特种设备型式试验合格证**

No. TX F380-003-06 0070

申请单位名称及地址: 深圳市利勤电子有限责任公司  
深圳市龙岗区布吉镇坂田物资工业园 2 栋 5 楼

制造单位名称及地址: 深圳市利勤电子有限责任公司  
深圳市龙岗区布吉镇坂田物资工业园 2 栋 5 楼

产品名称(设备型式): 电梯控制柜

型号规格: LQE3000  
额定速度: 1.75 m/s 额定功率: 18.5kW

产品配置(见附件): 电梯控制柜产品配置表

型式试验报告编号: T3-F38-06-070

本证所阐述的结论覆盖以下型号规格产品(产品配置不变):  
型号: LQE3000  
额定速度:  $\leq 1.75\text{m/s}$ , 所控制电梯的额定功率:  $\leq 18.5\text{kW}$   
经型式试验, 确认该产品符合《电梯型式试验规则》(报批稿)规定。

发证日期: 2006年12月21日

**NETEC 国家电梯质量监督检验中心**

附: 1. 本证是对所明确覆盖范围内设备型式的确认, 仅对样品本身试验时的合格与否负责;  
2. 证书持有者有责任保证产品符合标准规定和保证产品与型式试验样品的一致性。

# 6. Certificates



## ➤ LEACH (SZ) Co., Ltd.

ISO 9001:2008



ISO 13485:2003



# 7. Service & Main Products



## Service

**PCB Assembly**

**Box Building**

**Full turnkey service**

**Cost effective  
material procurement**

**After sale service**

## Product

**AC drives/Servo board**

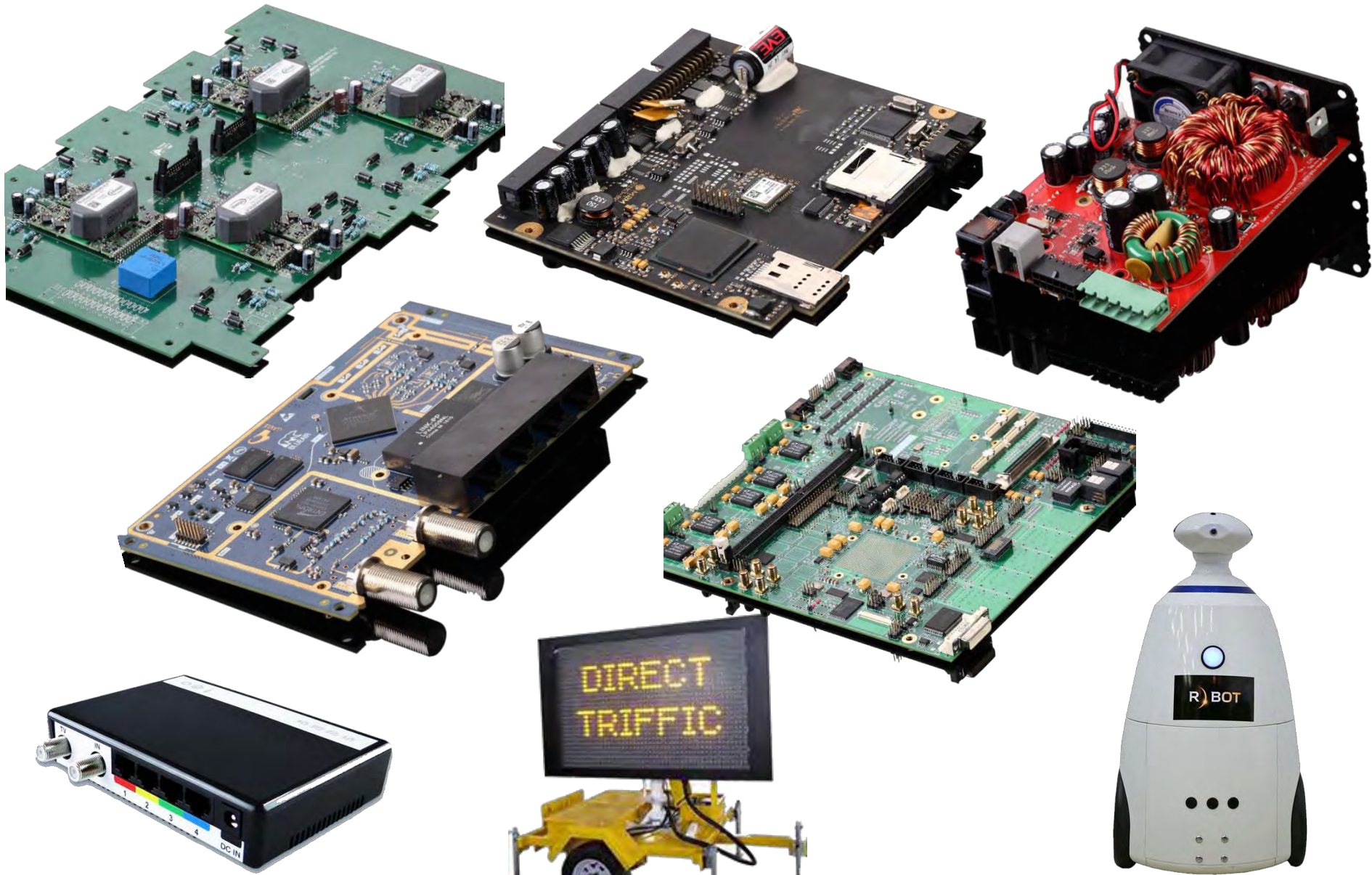
**Medical device board**

**Educational robot board**

**Customized WiFi Modem**

**Power Supply**

# 8. Products Shows

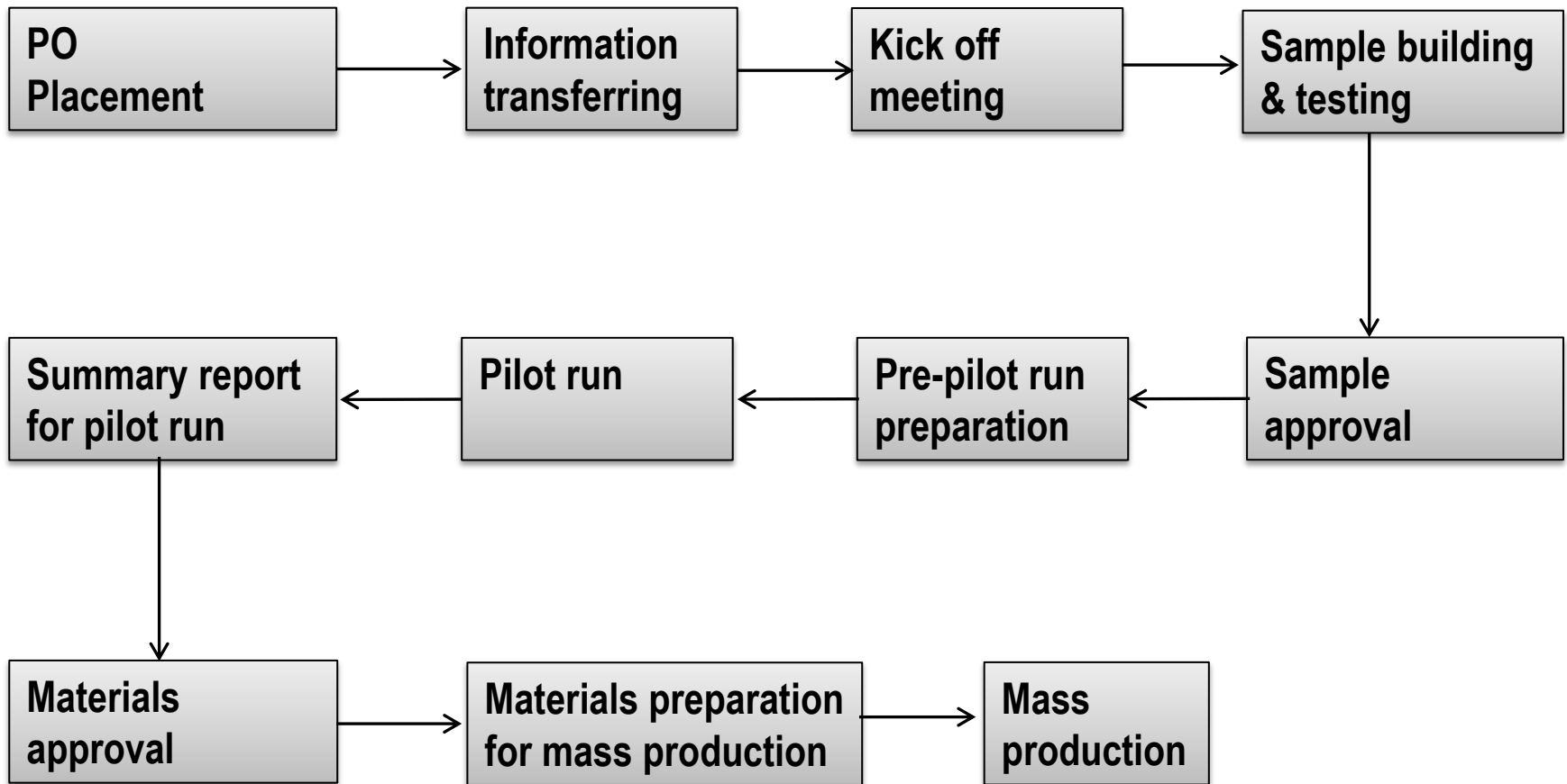


# 9. Supply Chain Management

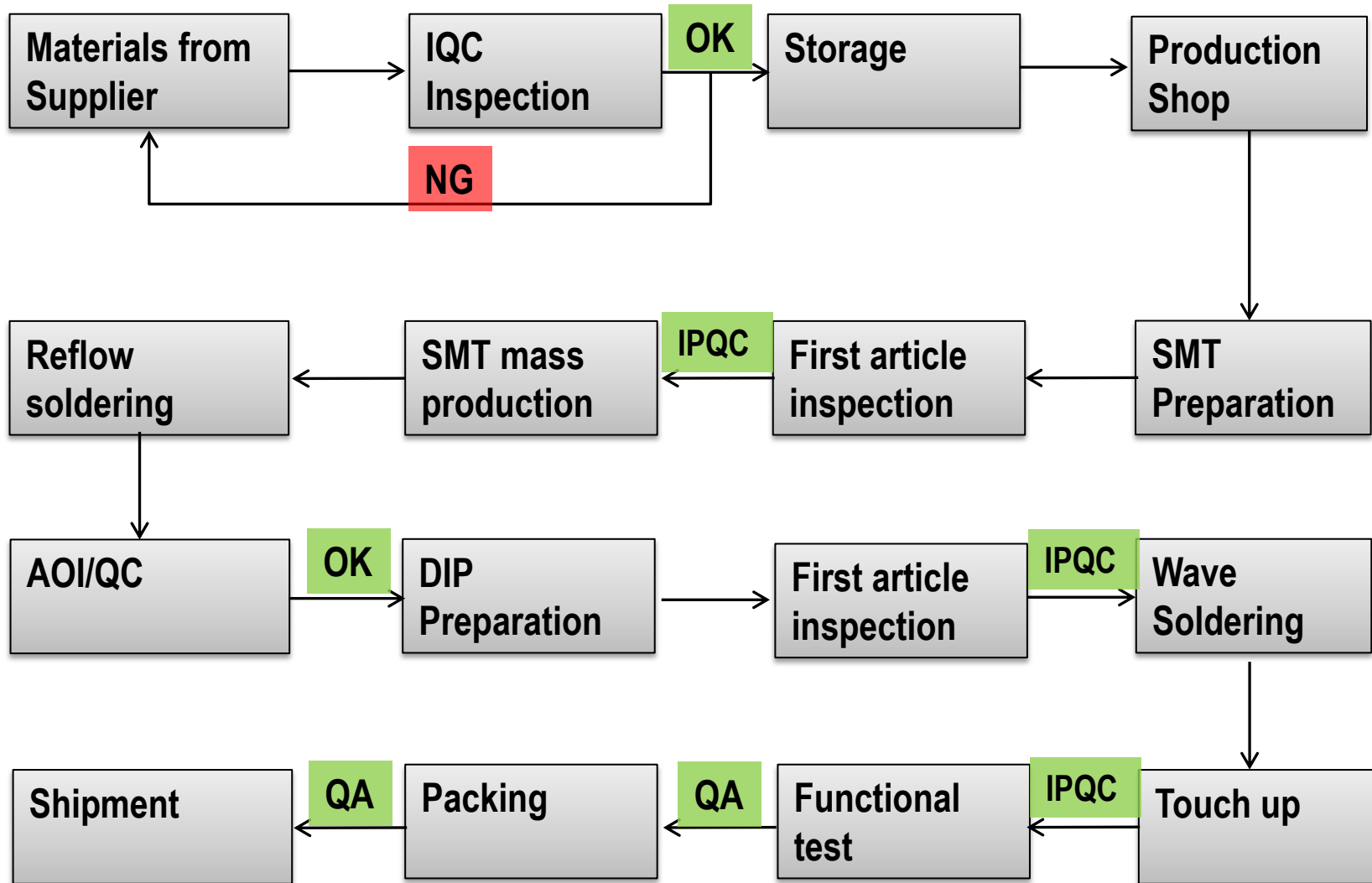


- **Leach use ERP system to manage more than 250 vendors and around 6000 kinds of components.**
- **We copy the original BOM exactly.**
- **All the materials are sourced from authorized distributor or manufacturer, and the alternative parts must be approved by our customers.**
- **We audit the suppliers regularly.**

# 10. NPI Flow Chart



# 11. Quality Management System



# 12. Customers all over the world

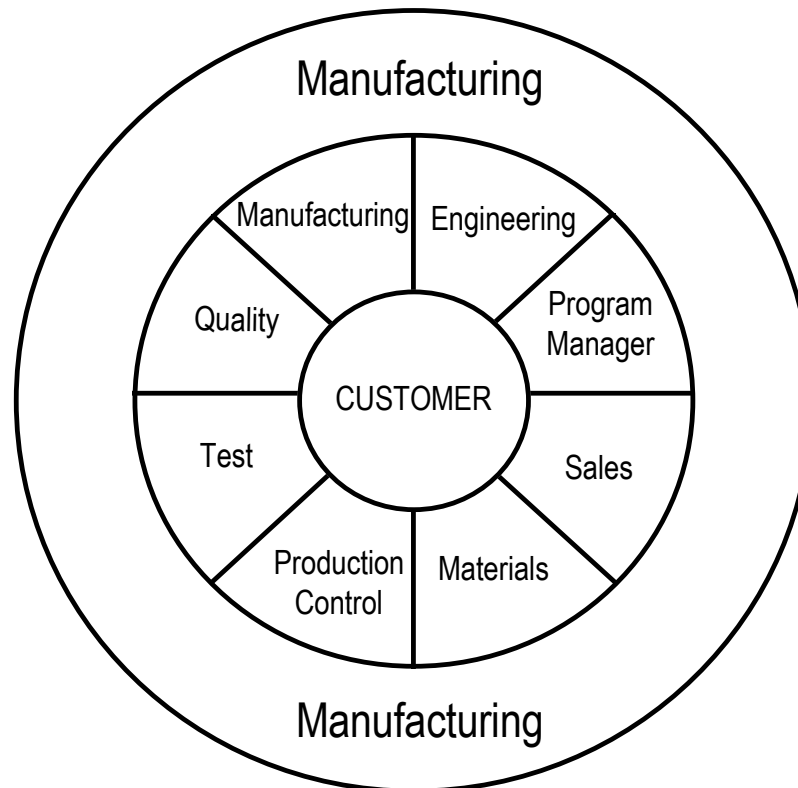


# 13. Reliable EMS Partner



- Leach is committed to become the top-class partner of our customers.
- Leach has a customer-oriented team to provide you the competitive quotation, quality assurance and the on-time delivery.

## Customer Focus Team





# **Thanks!**

**[julianne@leach-pcba.com](mailto:julianne@leach-pcba.com)**