



YOUR TACTICAL MOBILITY SOLUTIONS



DESCHAMPS
SINCE 1860



Deschamps was founded in 1860 and initially specialised in the production of high value woven technical fabrics. Combining tradition and innovation, the Company is now a world leader in ground reinforcement matting systems and a major designer for light crossing systems. Deschamps' products satisfy stringent requirements in terms of low weight and easy and rapid deployment.

R&D capabilities, combined with high performance industrial facilities and diverse complementary businesses, enable the Deschamps Group to design and produce sophisticated mechanical products procured by numerous defence organisations and strategic companies worldwide.

Located in the south west of France and in New Jersey (USA), global export has remained at the heart of strategic development for the Company, resulting in relevant reactivity and adaptability to meet the needs of foreign markets.

Deschamps is registered with the French and American Ministries of Defence, and with all NATO Member Countries as a supplier under codes **FA7JO** for Deschamps and **3N2Z7** for Deschamps Mat Systems Inc. However, products within the defence range do not require export authorisation.

Deschamps has held **ISO 9001:2000** certification since 2002 and **ISO 14001** and **ISO 18001** since 2006.

The Deschamps Group endeavour to fulfil technical and operational needs of tri-service Forces worldwide. Deschamps' R&D expertise responds to challenges initiated by its customers, thus benefiting all products manufactured by the Company.



Helipad



Tentfloor



Mobi-Deck



Beach Access Mat



GRIMAT



Traction mats



Aircraft recovery



Deployment systems



Helipad

PORTABLE LANDING MAT



Mobi-Mat® Helipad is designed for the rapid and safe establishment of landing zones for expeditionary Forward Operating Bases (FOB), Forward Arming and Refueling Point (FARP), Drop Zones (DZ), and Medical Evacuation (MEDEVAC).

Safe and cost effective

Mobi-Mat® Helipad reduces the hazards caused by blowing sand, dirt, snow and stones while preventing damage to either the aircraft or personnel. The matting saves on the wear and tear on expensive helicopter rotor blades and engines by reducing the introduction of FOD (Foreign Object Damage).

Robust

Mobi-Mat® patented surface follows ground contour without permanent deformation and resists to heavy wheeled vehicles.

Highly visible area

The crew can locate and orientate on it from considerable distances.

Non-slip porous surface

Secures personnel movement near the aircraft and its porosity allows the passage of liquids thus reducing the risk of fire.

Easy installation and reconfiguration

One roll is easily carried and deployed by 2 persons. Connectors and stakes are in the kit for easy assembly of any desired dimensions.

Minimum site preparation required

Provides considerably more flexibility in site selection over steel, aluminium or composite matting.

Battle proven

The U.S. Armed Forces has and continues to use Mobi-Mat® successfully during ongoing operations.



Technical Characteristics

Kit P/N	164 784 - 06	164 775 - B	164 776 - B	164 782
Designation	Helipad	Helipad	Helipad	Helipad
Nato Stock Number	5680-14 544-2276	5680-14 544-2276	5680-14 559-6807	/
Mobi-Mat® type	A2X	A2X	A2X	A2X
Dimensions	20 x 16.8 m 65.2' x 55.2'	50 x 50.4 m 164' x 165.6'	20 x 21 m 65.2' x 69'	33.7 x 30 m 110' x 99'
Nb of rolls per kit	6	60	10	24
Totale surface	240 m ² 2 710 sqft	2500 m ² 27 110 sqft	400 m ² 4 526 sqft	1011 m ² 10 890 sqft
Roll dimensions				
Roll weight	72.1 kg 159 lb	Schemas of the different kits :		
Roll diameter	0.5 m 1.64'			
Stainless steel eyelets per roll	14			
Handling strips per roll	2			
Toolbag : 4 x 1000 mm (39.4") stakes	2	8	3	2
Bag : 6 x 1000 mm (39.4") stakes	7	40	8	16
Jack set for stake retriever (+bag)	2	4	2	2
8 I-shaped connections pack	3	30	7	22
+ Optional thermic hammer set	1	2	1	1

A2X



A2X : 1,65 kg/sqm (0,34 lb/sqft)

TEMPORARY FLOOR & PATHWAY



Ideal to create temporary walkways and facility flooring for shelters, hangars, dining halls and kitchens, and maintenance shops, Mobi-Mat® Tentfloor provides primary and secondary flooring to support expeditionary forces flooring requirements.

Low cubic volume

Mobi-Mat® Tentfloor is a light weight air-transportable roll out matting which can be carried and installed manually in minutes.

Simple of use

Mobi-Mat® Tentfloor was designed with the warfighter in mind by providing the matting in rolls for fast and easy installation without prior training and excluding spare parts. Each Mobi-Mat® Tentfloor kit is supplied with a variety of anchoring devices to support all types of terrain.

Durable

Made from a patented corrugated high-density polyester mesh material originally designed for vehicular use, Mobi-Mat® Tentfloor is puncture and tear resistant and suitable for repeated vehicle traffic.

Permeable

Mobi-Mat® Tentfloor's permeability prevents water from pooling on the surface while accommodating every type of terrain with flexibility without degrading the structure of the matting.

Resistant to

Corrosion, rot, chemicals, petroleum fuels, UV and temperatures ranging from -40°C (40°F) to +80°C (176°F).

Recommendation

Depending on ground conditions, users can install Mobi-Mat® Tentfloor directly on the ground or on top of a non-woven geotextile.

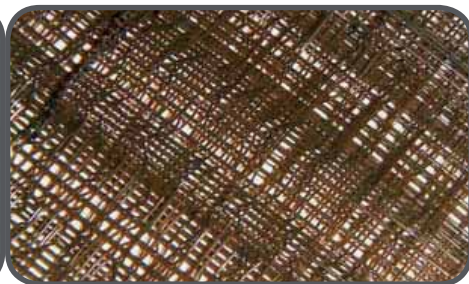




Technical Characteristics

Kit P/N	164777-T		164778-T		164779-T		164774-T	
Designation	TENTFLOOR		TENTFLOOR		TENTFLOOR		TENTFLOOR	
Mobi-Mat type	LX		LX		LX		LX	
Color	Brown		Brown		Brown		Brown	
Quantity of rolls / kit	1		1		1		4	
Width	2.2 m	7.2'	2.2 m	7.2'	2.2 m	7.2'	4.2 m	13.8'
Length	6 m	20'	12 m	40'	25 m	83'	10 m	34'
Roll weight	22 kg	48.4 lbs	38 kg	83.6 lbs	74 kg	162.8 lbs	70 kg	154 lbs
Roll diameter	0.3 m	1'	0.45 m	1.5'	0.6 m	2'	0.45 m	1.5'
Total surface	13.2 m ²	144 sqft	26.4 m ²	288 sqft	55 m ²	597.6 sqft	168 m ²	1876.8 sqft
FINISHING OF THE PRODUCT : Flat reinforcement bar for mat end	2		2		2		-	
ACCESSORIES AND TOOLS : Pack of 8 x 250 mm (10") staples	3		5		10		-	
Toolbag of 8 x 500 mm (20") stakes + tools Bag of 12 x 500 mm (20")	-		-		-		1	

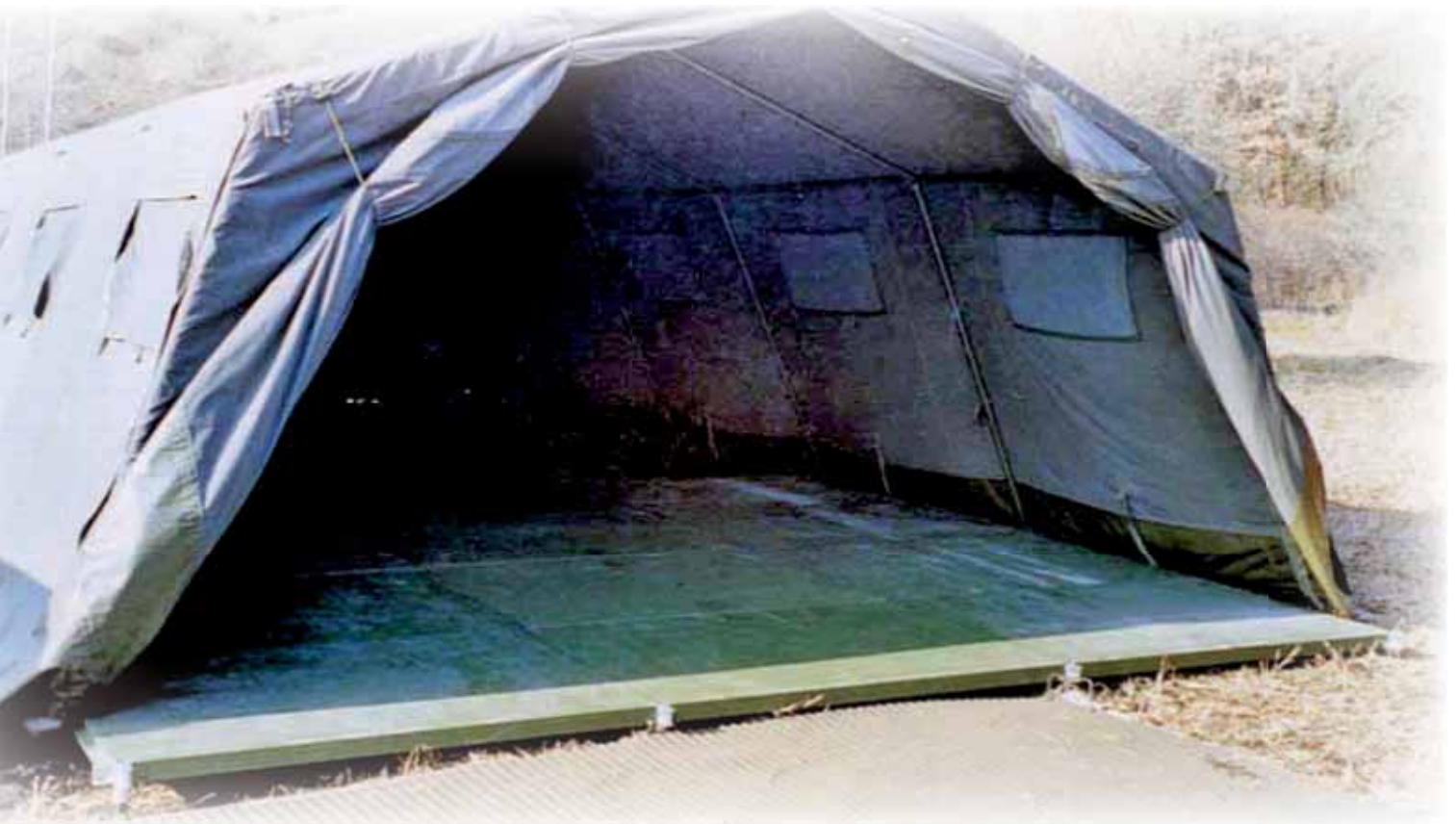
LX



LX : 0.7 kg / sqm (0.14 lb / sqft)

Mobi-Deck

RIGID FLOOR FOR TENT



Mobi-Deck is the ideal and innovating solution for assuring a dry floor with any type of tent and protecting people and equipment from flooding. Mobi-Deck's air transportability supports the requirements for today's expeditionary military.

Fast installation

Made of adjustable panels, a two-person crew can install Mobi-Deck at a rate of 50 square meters (538 sqft) per hour. Less than 30 minutes are required for a 55 square meters tent (592 sqft tent).

Lightweight

Each panel weighs 35 lb (15 kg). The panels are stackable and compatible with air transport pallets.

Easy handling

Each panel can be carried with suction discs.

Safe

Mobi-Deck uses a raised connecting frame, which not only supports the decking material but also assists with cable distribution and integration. This feature is ideal to create temporary flooring for command posts.

Adjustable height

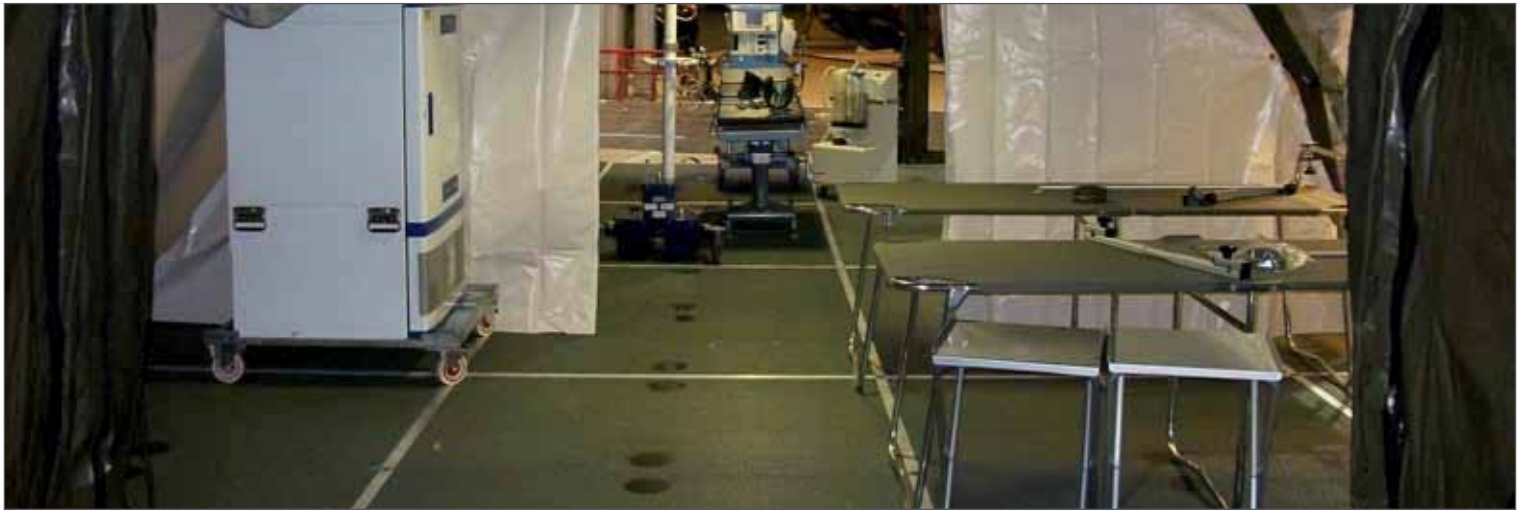
Up to 7" (180 mm), feet adjustment is possible from the top surface.

Modularity

Unlimited in length and width

Non-slip surface





Technical Characteristics

Kit P/N	MD500/180	
Designation	MOBI-DECK 500 with adjustable feet*	
Mechanical resistance	500 kg/m ²	102,5 lb/sqft
Deck dimensions	Depends on shelter dimensions	
Panel dimensions	1.6 m x 1.1m	63" x 43"
Panel weight	15 kg	35 lb
Module** dimensions	2,28m x 1,68m	89" x 66"
Quantity of modules	Depends on shelter dimensions	
Illustration*** of a kit		

* Adjustable height = 180 mm (7")
 ** 1 Module is made of 2 panels
 *** Actual products may differ from illustrations





Designed to facilitate ship-to-shore movements, the BAM is a unique and capable Commercial-Off-The-Shelf (COTS) mat system for supporting off road mobility requirements during expeditionary missions over sand, gravel, or pebble beach.

Lightweight

The Medium Grade BAM type A2X is light enough for two people to rapidly carry and deploy the matting manually within minutes. Rolls can also be rapidly dismantled and reassembled to accommodate any operational requirement.

Patented non-skid surface

Usable on any surface, Mobi-Mat® BAM provides traction under all environmental conditions for ground personnel and wheeled ground support vehicles while preventing bogging.

Rugged dependability

Mobi-Mat® BAM will resist thousands of vehicle passages on supported sandy beaches.

Quick installation

No requirement for back-blading surface before laying. Stakes and connectors are supplied with each roll to anchor and link the Mobi-Mat® BAM.

Versatile

The Mobi-Mat® BAM provides an immediate workspace from which landing team personnel may conduct subsequent lay-down operations.

Recommendation

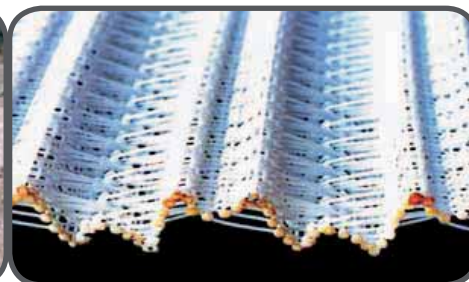
In several situations, units may use a subsurface geotextile under the rolls to prevent the mud from sipping through the mat.



Technical Characteristics

Kit P/N	154058	154059
NSN	5680-14-502-4086	5680-14-513-6207
Number of rolls / Kit	1	1
Total surface	42 m ² - 455.4 sqft	82 m ² - 910.8 sqft
Kit weight	182 kg - 401 lbs	260 kg - 573 lbs
	Designation	Designation
	BEACH ACCESS MAT	BEACH ACCESS MAT
Dimensions	4.20 m x 10 m 13.8' x 33'	4.20 m x 20 m 13.8' x 66'
Mobi-Mat® Type	A2X	A2X
Color	White	White
Roll weight	86 kg 183 lbs	157 kg 335 lbs
Roll diameter	0.45 m - 1.5'	0.55 m - 1.8'
FINISHING OF THE ROLLS :		
Stainless steel EYELETS per roll diam. 35 mm - 1.37"	12	14
End Bar V25 4.20 m - 13.8' long	2	2
Handling strips with handles	2	-
I-shaped connections	8	8
Pair of lifting straps	-	1
+ Set up accessories kit		

A2X



A2X : 1.65 kg / sqm (0.34 lb / sqft)



GROUND IMPROVEMENT MAT



Designed to accommodate heavy load traffic on low bearing capabilities terrains, the Ground Improvement Mat is a heavy duty and Commercial-Off-The-Shelf (COTS) roll out mat system for supporting off road mobility requirements during expeditionary missions.

Excellent load bearing capability

Reinforced with composite strengthening rods, the mat spreads the weight of vehicles and increase the load bearing capability of the ground while reducing rutting.

Patented non-skid surface

Mobi-Mat® GRIMAT provides traction under all environmental conditions for ground support vehicles. Even submerged, the patented corrugated surfacing retains its surface's high-traction capability.

Rugged dependability

GRIMAT permits high vehicular wheeled traffic and enhances velocity of expeditionary units.

Rapid deployment and recovery

Can be achieved with Deschamps' Automatic Deployment Systems. Manual positioning or reconfiguration can also be achieved with laying and recovery straps included in the kit.

Versatility

Units may use Mobi-Mat® GRIMAT for river fording, to by-pass a blown out bridge or to afford speed of vehicle movement during military operations. You can deploy your mat with Dispenser systems, which will drive and unroll the mat simultaneously.

Recommendation

In several situations, units may use a subsurface geotextile under the rolls to prevent the mud from sipping through the mat.



Technical Characteristics

Kit P/N	154066	154073	154089	154090
Number of rolls / Kit	1	1	1	1
Total surface	107.2 m ² 1154.4 sqft	107.2 m ² 1154.4 sqft	53.84 m ² 579.6 sqft	53.84 m ² 579.6 sqft
Kit weight	983 kg 2167 lbs	793 kg 1748 lbs	1055 kg 2325 lbs	863 kg 1902 lbs
	Designation	Designation	Designation	Designation
	GRIMAT	GRIMAT	GRIMAT	GRIMAT
Dimensions	4.20 m x 25 m 13.8' x 83'	4.20 m x 25 m 13.8' x 83'	4.20 m x 12.50 m 13.8' x 42'	4.20 m x 12.50 m 13.8' x 42'
Mobi-Mat® Type	MM3 V25	MM3 C25	MM3 V25	MM3 C25
Color	White	White	White	White
Roll weight	869 kg 1916 lbs	659 kg 1453 lbs	440 kg 970 lbs	336 kg 741 lbs
Roll diameter	1 m - 3.3'	1 m - 3.3'	0.75 m - 2.47'	0.75 m - 2.47'
FINISHING OF THE ROLLS :				
Stainless steel EYELETS per roll diam. 3.5 cm - 1.38"	8	8	8	8
End Bar 35 cm - 13.8" long	2	2	2	2
Separating non-woven undermat	1	1	1	1
Pair of lifting straps	1	1	1	1
Straps with pawl	2	2	2	2
I-shaped connections	8	8	8	8
+ Set up accessories kit				

MM3 V25



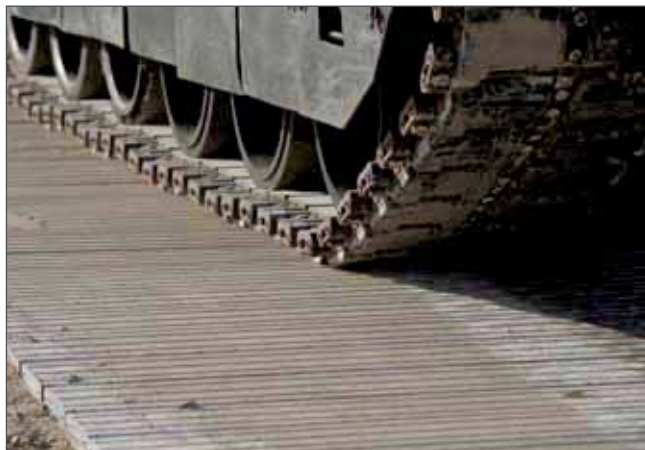
Heavy Duty Grade, reinforced with fiberglass bars every 6" (15cm)
8 kg / sqm (1.64 lb / sqft)

MM3 C25



Heavy Duty Grade, reinforced with carbon bars every 6" (15cm)
6 kg / sqm (1.23 lb / sqft)

FAST COMPOSITE ROADWAY



Designed for supporting offroad mobility requirements during Joint Logistics Over The Shore -JLOTS- operations, the Fast Composite Roadway FCR is a heavy duty and Commercial-Off-The-Shelf (COTS) roll out aluminium mat system.

Rugged and durable

The FCR resists high tracked vehicle traffic - even when they are equipped with snow cross - on any ground surface, in up to 30% gradient slopes.

Low cubic space

The FCR plates are linked by innovative composite connectors which allow a reduction in weight and volume due to the possibility of rolling it into a compact roll.

Non-skid surface

The FCR consists of a series of individual non-skid Aluminium plates which provide traction under all environmental conditions.

Innovative

The FCR combines the benefits of a proven material (aluminium) and those of a new innovative plate design thus making it ideal to accommodate heavy load and regular traffic on any ground surface and particularly low bearing capabilities terrains.

Easy maintenance

The innovative and quick connectors between plates allow easy dismantling if a plate was to be changed.

Rapid deployment and recovery

Can be achieved with Deschamps' Automatic Deployment Systems either trailer-mounted or Flatrack-mounted on a 10t flatrack carrier.



Technical Characteristics

FCR Specifications	FCR II	FCR III
DIMENSIONS		
Maximum length	50 m / 164'	
Standart width	4.6 m / 15.1'	
Roll diameter (int.)	300 mm / 11.8'	
Roll diameter (ext.)	1600 mm for 50 m 6.14 lbs / sqft	
Thickness	38 mm / 5.43"	
Weight	36 kg/m ² / 7.37 lbs/sqft	
ENVIRONMENT		
Temperature of use and storage	-40°C up to +80°C -40°F up to 176°F	
Rusting and saline fog resistance	Good	
UV resistance	Very good	
Fire resistance	M0	
Hydro carbide and oil resistance	Good	
MECHANICAL		
Snow cross resistance	Yes	Yes
COMPOSITE LINK		
Material	Technical fabric	100 % aluminum
Flexural resistance	Soft material	Soft material

FCR



Traction Mat



VEHICLE SELF RECOVERY MAT



Mobi-Mat® Traction Mat is an Individual Vehicle Self Recovery Mat (IVSRM) for Ground Mobility Vehicles.

Composition

Made from a roll of high-density polyester mesh with a patented non-skid surface, Traction Mat ensures excellent grip of the tires in extreme conditions.

Lightweight and compact

Easily stored on the hood, roof, or in the cargo compartment of tactical vehicles or conveniently strapped to front, side or rear grills and racks the Mobi-Mat® Traction Mat provides operators a simple tool to free vehicles mired in sand, mud or snow.

Easy installation

A stainless steel eyelet at each end enables the mat to be secured to the ground by means of a stake supplied in the kit.

Curative

The Mobi-Mat® Traction Mat enables an immobilized vehicle to self recover from the situation.

Preventive

The Mobi-Mat® Traction Mat can be laid in advance in an area known to be impassable.

Resistant

To UV and a temperature range of -40°C (-40°F) to +80°C (176°F).

Users

The Mobi-Mat® Traction Mat is currently used by many NATO conventional and Special Operations Forces. These countries have successfully used the matting in both training and operational deployments to support traversing soft terrain or recovering ground vehicles from when bogged down in extreme terrain situations.



Technical Characteristics

Kit P/N	154077		154078	
Designation	TRACTION MAT		TRACTION MAT	
Mobi-Mat® Type	A2X		A2X	
Color	White		White	
NSN	5680-14-545-8875		Awaiting	
Quantity of rolls / kit	1		1	
Width	0.5 m	1.6'	0.8 m	2.6'
Length	5 m	16.4'	8 m	26'
Roll weight	4.5 kg	10 lbs	11 kg	24 lbs
Roll diameter	0.3 m	1'	0.4 m	1.3'
Total surface	2.5 m ²	26.24 sqft	6.4 m ²	67.6 sqft
Stainless steel eyelets	2		2	
Handling strips with handles (lose)	1		1	
I-shaped connection	2		2	
Bichromated steel stake of 500 mm	8		8	

A2X



A2X : 1.65 kg / sqm (0.34 lb / sqft)

Tow-Mat

AIRCRAFT RECOVERY MAT



The Tow-Mat, using the innovative and patented concept of Mobi-Mat®, is designed for creating ground reinforcement and towing pathways for the recovery of any type of aircraft.

Excellent load bearing capability

Strengthening bars are inserted in the mat every 15 cm (6") and increase the load bearing capability of the ground while reducing rutting.

Lightweight for rapid deployment

Easy lifting and installation by two operators.
Easy anchoring and connection of mats with I-shaped connectors.
Easy reconfiguration of the towing pathway using the handling hooks provided in the kit.

Unique non-slip and porous surface

With its patented tridimensional surface, each Tow-Mat offers an excellent grip and decreases traction effort while avoiding the risk of causing landing gear secondary damage.
No risk of puncturing the aircraft tires unlike metal plates.
Easy removal due to the mat porosity unlike metal plates.

Resistant to

Temperatures ranging from -40°C (40°F) to +80°C (176°F), corrosion, rot, chemicals, petroleum fuels (AVGAS-JET A1) and hydraulic fluids like skydrol.

Long shelf life and low maintenance

Easy cleaning with a high water pressure system.



Designation	Tow-Mat	Tow-Mat	Tow-Mat	Tow-Mat	Tow-Mat	Tow-Mat	Tow-Mat
Kit P/N	154062-09	154081-09	176283	164799-12	164799-15	167656	176281
Aircraft type	Fighters	Fighters	C-130	A330 MRTT, KC-45A, AWACS, KC767	A340 TLRA	C-17	C-5
Mobi-Mat® type	MM3 V25 Polyester Mat reinforced with fiberglass bars every 15 cm	MM3 C25 Polyester Mat reinforced with carbon bars every 15 cm	MM3 V25 Polyester Mat reinforced with fiberglass bars every 15 cm	MM3 C25 Polyester Mat reinforced with carbon bars every 15 cm	MM3 C25 Polyester Mat reinforced with carbon bars every 15 cm	MM3 C25 Polyester Mat reinforced with carbon bars every 15 cm	MM3 C25 Polyester Mat reinforced with carbon bars every 15 cm
Colour	White	White	White	White	White	White	White
Quantity of rolls / kit	9	9	10	12	15	18	27
Kit weight	986 kg 2174 lbs	796 kg 1755 lbs	1058 kg 2333 lbs	867 kg 1912 lbs	1506 kg 3321 lbs	1386 kg 3056 lbs	408 kg 900 lbs
Dimensions	5 m x 1.05 m 16.4' x 3.45'	5 m x 1.05 m 16.4' x 3.45'	5 m x 1.05 m (16.4' x 6.94') : 1 roll 5 m x 2.1 m (16.4' x 3.45') : 9 rolls	3 m x 3.4 m 9.84' x 11.16'	3 m x 3.4 m 9.84' x 11.16'	3 m x 2.1 m (9.84' x 6.88') : 6 rolls 3 m x 4.2 m (9.84' x 13.78') : 12 rolls	1.5 m x 1.05 m (4.9' x 3.45') : 8 rolls 3 m x 2.1 m (9.84' x 15.1') : 19 rolls
Roll weight	45 kg 100 lbs	36 kg 85 lbs	45 kg 100 lbs 93 kg 205 lbs	74 kg 163 lbs	74 kg 163 lbs	46 kg 101 lbs 92 kg 203 lbs	12 kg 26 lbs 103 kg 226 lbs
Roll diameter	0.40 m 15.75"	0.40 m 15.75"	0.40 m 15.75" 0.40 m 15.75"	0.35 m 13.78"	0.35 m 13.78"	0.35 m 13.78"	0.20 m 7.87" 0.35 m 13.78"
Total surface (per kit)	47.25 m ² 507 sqft	47.25 m ² 507 sqft	100 m ² 1071 sqft	123 m ² 1318 sqft	153 m ² 1647 sqft	37 m ² 398 sqft 151 m ² 1627 sqft	12.6 m ² 398 sqft 262 m ² 2818 sqft
FINISHING OF THE ROLLS :							
Separating non-woven undermat	36	36	40	48	60	72	108
I-shaped connections	36	36	58	72	90	168	184
Handling straps with handles	18	18	20	36	45	48	73

These kits are available in other rolls quantities on request.

Non contractual document subject to change without prior notification.

MM3 V25



Heavy Duty Grade, reinforced with fiberglass bars every 6" (15cm)
8 kg / sqm (1.64 lb / sqft)

MM3 C25



Heavy Duty Grade, reinforced with carbon bars every 6" (15cm)
6 kg / sqm (1.23 lb / sqft)

Flatrack 100

FLATRACK-MOUNTED ROADWAY DISPENSER



If you are equipped with a Flat Rack Truck including a hook lift system, then the Flatrack Dispenser is the ideal tool to deploy your temporary roadway and build a 13.8' wide and 328' long (4.20 m x 100 m long) access road in minutes.

Rapid and easy deployment

Only 15 minutes and 2 operators are required to deploy four interconnected 82' long sections of Mobi-Mat[®] and build a 328' (100m) long roadway.

To unroll the mat, the trucker drives in reverse while an operator unrolls the roadway with the remote control.

Flexibility

The Flatrack Dispenser complies with Stanag 2413 and is therefore adjustable to any vehicle equipped with an hydraulic hook lift system.

Easy transportation and storage

Once loaded, the Flatrack Dispenser can be transported to be operational anywhere you need.

Robust and automated system

Made with high anti-corrosion steel beams, the Flatrack includes storage enclosures and a remote control to ensure the winding and the unrolling of the mat. The Flatrack is equipped with an independent hydraulic power to be useable on any carrier.

Removable reel

The roadway is wound round a removable beam. When the beam is empty, a new one can be installed on the Flatrack with a crane.

Simple operation and maintenance procedures

User and environment friendly



Technical Characteristics

P/N	Designation		
154475	FLATRACK ROADWAY DISPENSER		
CONSTRUCTION	High resistance welded steel beams covered with an anti-corrosion finish and an epoxy paint (Nato Green, red or other standard colors)		
DIMENSIONS	Transport configuration		
	Length	5.67 m	18.6'
	Width	2m40	7.9'
	Height without Mobi-Mat®	2m16	7.1'
	Deployment configuration		
	Length	6.80 m	22.3'
Width	5.82 m	19.1'	
TARE WEIGHT	Weight without Mobi-Mat®	7100 kg	15653 lb
COMPATIBLE VEHICLES	Any Flat Rack Truck equipped with a hook lift system complying with Ampliroll or STANAG 2413 Standard		
MOBI-MAT® CAPACITY	Maximum roll width	4.60 m	15.1'
	Maximum roll length for MM3 type	100 m	328.1'
	Maximum roll diameter	2 m	6.6'
EQUIPMENT	Integrated Hydraulic Power (Petrol or Diesel Motor Unit)	Yes	
	Removable steel beam with drum	Yes	
	Lockers for tools storage	Yes	
	Hydraulic outputs for tools	Option	
	Remote control	Yes	

FRONT-END LOADER ROADWAY DISPENSER



If you are equipped with a Front-end Loader, then the Front-end Loader Roadway Dispenser (F.L.R.D.) is the ideal tool to deploy the Mobi-Mat Quick-Access and build a 13.8' wide x 328' long (4.20 m x 100 m long of MM3) temporary roadway.

Rapid and easy deployment

Only ten minutes and one operator are required to deploy four interconnected 82' (25m) long sections of Mobi-Mat® and build a 328' (100m) long roadway or retrieve it entirely. To build the access way, the operator drives the vehicle forward while deploying the mat using the remote control.

Flexibility

The F.L.R.D. is adjustable to any type of loader using the hydraulic system of the loader. The F.L.R.D. can be connected to the Front-end Loader either with the vehicle connectors or with the forks.

Robust and automated system

Equipped with high anti-corrosion steel beams, the F.L.R.D. includes a remote control to ensure the winding and the unrolling of the mat. The F.L.R.D. is equipped with a hydraulic system to be connected to any Front-end Loader.

Removable reel

The roadway is wound round a removable beam. When the beam is empty, a new one can be installed with a crane.

Simple operation and maintenance procedures

User and environment friendly



Technical Characteristics

P / N	Designation		
154476	FRONT-END LOADER ROADWAY DISPENSER - F.L.R.D.		
CONSTRUCTION	High resistance welded steel beams covered with an anti-corrosion finish and an epoxy paint (Nato Green, red or other standard colors)		
DIMENSIONS	Transport and deployment configuration		
	Lenght	2.35 m	7.7'
	Width	5.05 m	16.6'
	Height without Mobi-Mat®	2.31 m	7.6'
TARE WEIGHT	Weight without MM3	1800 kg	3968 lb
COMPATIBLE VEHICLES	Any Front-End Loader equipped with forks and an Hydraulic output for accessories as described below.	Volvo BM 120, Case 821C, etc...	
	Distance between fork centers	1.20 m	3.94'
	Minimal fork section	0.15 x 0.06 m	5.9' x 2.36'
	Maximal fork section	0.26 x 0.08 m	10.43' x 3.15'
	Minimal Hydraulic pressure	2600 to 2900 Psi	
	Minimal Hydraulic flow	50 l / min	13.2 gal / min
MOBI-MAT® CAPACITY	Maximum roll width	4.20 m	13.8'
	Maximum roll length for MM3 type	100 m	328.1'
	Maximum roll diameter	2 m	6.5'
EQUIPMENT	Integrated Hydraulic Power (Petrol or Diesel Motor Unit)	No	
	Removable steel beam with drum	Yes	
	Lockers for tools storage	Yes	
	220 V and 24 V input	Yes	
	Remote control	Yes	

TRAILER-MOUNTED ROADWAY DISPENSER



Build quickly and safely temporary Mobi-Mat® roadways with a Trailer Dispenser designed to easily carry, deploy and recover 13.8' wide x 164' long (4.20 m x 50 m long) rolls of matting in minutes.

Rapid and easy deployment

The deployment process can be carried out in reverse or by the front if your vehicle is equipped with a frontal towing attachment.

Only 5 minutes and 2 operators are required to deploy or retrieve two interconnected 82' (25m) long sections of Mobi-Mat® GRIMAT and build a 164' (50m) long roadway.

Easy transportation and storage

Adjustable to any towing vehicle, the Trailer can be towed and used by any vehicle in service in the Airport Area.

Robust and automated system

Made with high anti-corrosion steel beams, the Trailer Dispenser includes storage enclosures and a special remote control to ensure the winding and the unrolling of the mat.

The Trailer Dispenser is supplied either with an electrical engine or hydraulic motor.

Optional

A non-woven geotextile spool can be installed in the front rack and deployed simultaneously with the temporary roadway you have chosen.



Technical Characteristics

P/N	Designation		
153675	TRAILER ROADWAY DISPENSER		
CONSTRUCTION	High resistance welded steel beams covered with an anti-corrosion finish and an epoxy paint (Nato Green, red or other standard colors)		
	Transport configuration		
	Length	6.45 m	21.2'
	Width	2.25 m	7.4'
	Height without Mobi-Mat®	1.89 m	6.2'
	Deployment configuration		
	Length (when the ring is folded : 5.80 m - 19')	4.60 m	15'
	Width	4.60 m	15'
	Height without Mobi-Mat®	1.89 m	6.2'
	TARE WEIGHT	Weight without Mobi-Mat®	1700 kg
COMPATIBLE VEHICLES	Any Front-End Loader equipped with a towing attachment.		
MOBI-MAT® CAPACITY	Maximum roll width	4.20 m	13.8'
	Maximum roll length for MM3 type	50 m	16.4'
	Maximum roll diameter	1 m	3.2'
EQUIPMENT	Integrated Hydraulic Power (Petrol or Diesel Motor Unit)	Yes	
	Removable steel beam with drum	Yes	
	Lockers for tools storage	Yes	
	Hydraulic outputs for tools	Yes	
	Remote control	Yes	

References

LAND FORCES



Australian Army



Belgium Army



Armée de Terre



Italian Army



Malaysian Armed Forces



Norwegian Army



New Zealand Army



Qatar Army



Singapore Army



Spanish Army



Swedish Army



Thailand Armed Forces



US Army 101st Airborne Div.



US Army Corps of Engineers.

US Army Corps of Engineers



Republic of China Army

AIR FORCES



Canada Air Force



Armée de l'air



German N.A.T.O Airbases



Japanese Air Self Defense Force



Navair



Royal Air Force



US Air National Guard



Spanish Air Force

NAVAL FORCES



Armada de Chile



Brazilian Navy



Marine nationale



Italian Navy



Japanese Navy Self Defense Force



Royal Marines



US Marine Corps



US Navy



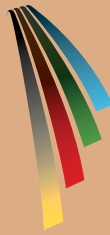
Turkish Amphibious Forces



Spanish Marine Corps

Our activities also extend to a civil range.





www.mobi-mat.com



DESCHAMPS
SINCE 1860

Usine de Bourissson
BP 20 - 16400 La Couronne - France
Tél. + 33 (0) 545 677 030 - Fax. + 33 (0) 545 678 160
deschamps@deschamps.fr

DMS
DESCHAMPS MAT SYSTEMS

218 Little Falls Road, Unit 7
Cedar Grove, NJ 07009, USA
Tél. + 1 973 928 3040 - Fax. + 1 973 928 3041
info@mobi-mat-dms.com